



## Thumbnails in Europeana Prototype

---

Julie Verleyen

22 April 2009

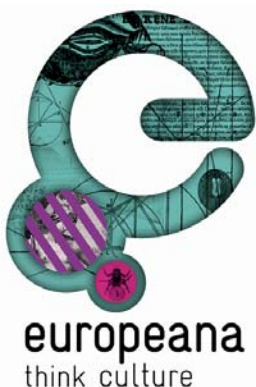
### Where thumbnail images come from?

In the metadata of a Europeana record the URL to the thumbnail image can be found in the field *eupeana:object* according to the [ESE specifications](#).

This URL must link directly to a resource which is an image (ex: <http://www.server.org/image.jpeg>) and NOT to an image embedded within a webpage.





There are 3 situations regarding the source of the thumbnail image:

1. The metadata include a URL to an existing thumbnail image: this URL is mapped to *eupeana:object*
2. There is no URL (because no existing thumbnail) but a thumbnail image can be generated from the resource that *isShownBy* links to: the URL mapped to *eupeana:isShownBy* is also mapped to *eupeana:object*
3. There is no URL (because no existing thumbnail) and no thumbnail image can be generated from the resource *isShownBy*: nothing is mapped to *eupeana:object* → *eupeana:hasObject* will be set to "False" and a default thumbnail will be used in the portal



## What are the default thumbnail images of the Europeana prototype portal?

When no thumbnail image is available for a Europeana object a default image corresponding to the Europeana type of the object is used. There are 4 default images:

Default thumbnail	Corresponding Europeana classification type
	Text
	Image
	Video
	Sound

## What types of thumbnail image format can be found in the Europeana prototype portal?

2 types of images are used for the Europeana Prototype:

- "briefDoc" image:
  - o Height=110 pixels
  - o If the image used as briefDoc image is smaller than 110px it is scaled up to 110px
  - o If the image used as briefDoc image is larger than 110px it is scaled down to 110px
- "fullDoc" image:
  - o Width=200 pixels
  - o If the image used as fullDoc image is smaller than 200px it remains unchanged
  - o If the image used as fullDoc image is larger than 200px it is scaled down to 200px



## What image format is used for which functionality?

Functionality	Type of cached image (briefDoc / fullDoc)	Image size
Home page carousel		Width=70 (*)
Search results page > brief display > gallery view	briefDoc	briefDoc size
Search results page > brief display > list view	briefDoc	Height=50 (*)
Search results page > full display	briefDoc	Width=25 (*)
Search results page > full display > related content	fullDoc	Width=200
Timeline	briefDoc	briefDoc size re-sized by Javascript functions

(\*) Either width or height is set to a specific value. Both values cannot be controlled together

## Caching

All thumbnails displayed in the Europeana portal interface (except the default thumbnails) are cached for a rapid presentation to the user.

Caching occurs in two of the 3 situations described in the 1st section of this paper:

1. Situation 1:
  - a. Thumbnail images are retrieved from remote server
  - b. Thumbnail are cached
2. Situation 2:
  - a. Full images retrieved from remote server
  - b. Thumbnails are created from full images (using Image Magik tool)
  - c. Thumbnails are cached
3. Situation 3:
  - a. No thumbnail image can be retrieved or created
  - b. No thumbnail caching → use of default thumbnail

